



# ATAKA SARANA INDONESIA



Mr. Diding

Email : [diding.ati@ataka.co.id](mailto:diding.ati@ataka.co.id)

Hp. +62 813 8482 5555

Kawasan Industri Greenland Cluster Batavia

Jl. Greenland II Blok AE NO. 15 Kota Deltamas,

Sukamahi, Cikarang Pusat-17530

# SOLID SOLUTIONS FOR CHALLENGING APPLICATIONS

---



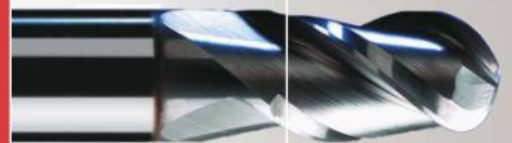
**HIGH  
PERFORMANCE  
MACHINING**

**JABRO-SOLID<sup>2</sup>**

**HSS-CO  
MACHINING**

**HIGH FEED  
MACHINING**

**HIGH SPEED  
MACHINING**



# STRUT MOUNT

---



## STRUT MOUNT

### YOUR CHALLENGE:

Improve productivity and reduce tool cost per operation as much as possible.

### OUR PROVEN SOLUTION:

For productivity and economy, Seco offers multiple custom disc milling cutters to cover a diverse range of components. One of these is disc mill R/L 335.29 with round inserts RPHT1204MOT for ductile cast iron.



## STRUT MOUNT

### YOUR CHALLENGE:

Improve productivity and reduce tool cost per operation as much as possible. Minimise cutting forces to avoid the pinch effect when machining the component.

### OUR PROVEN SOLUTION:

Fitted on a custom Seco EPB<sup>®</sup> arbor, the custom disc mill 335.19 using SNHQ insert is the first choice for slotting the shock absorber location. These products cover a range of widths from 4 mm to 12 mm, and offer excellent productivity and cost performance. For aluminium steering knuckles, we provide either indexable disc milling



## WHEEL SPINDLE

### YOUR CHALLENGE:

Improve productivity with minimum tool changes and reduce tool cost per operation as much as possible.

### OUR PROVEN SOLUTION:

Excellent performance results from the combination tool for O.D. turning, radius forming and O.D. turning & chamfering. The tool uses standard inserts for productivity and economy. Seco has developed a complete range of new Duratomic<sup>®</sup> grades, including TP grades that allow working at high cutting parameters in forged steel.

# BRAKE CALIPER FASTENING HOLES



**BRAKE CALIPER:  
ASSEMBLY CONTACT FACES**

**YOUR CHALLENGE:**

Achieve parallelism, squareness and high surface finish on both faces.

**OUR PROVEN SOLUTION:**

For productivity, economy and reliability, the square shoulder milling cutter R220.96 using XNEX0806 inserts with 6 cutting edges is the first choice for machining ductile cast iron and forged steel. The use of a standard cutter is Seco's first solution to decrease tool cost.



**BRAKE CALIPER:  
FASTENING HOLES**

**YOUR CHALLENGE:**

Drill precise holes, optimise the positional accuracy and squareness of both holes.

**OUR PROVEN SOLUTION:**

When high precision (up to IT7) and productivity are required, the Seco Feedmax™ SD265A is the first choice for drilling either ductile cast iron or forged steel. The drill is fitted in a Shrinkfit toolholder to get the best run out. A wide range of toolholders is available, such as the EPB 5600, 5603 and 5801 series.



# EPB TOOLING SYSTEMS



## THE POWER OF SHRINKFIT

### BENEFITS:

- Run out max.  $3\mu\text{m}$  at  $3\times D$ , for high precision machining
- High gripping forces
- Slender, symmetrical design, accurately balanced, ideal for high speed machining on 5-axis machines
- Wide range with different designs: EPB 5603 DIN  $4.5^\circ$  type, EPB 5801 slim type for long reaches, EPB 5600 for heavy duty applications, cylindrical extensions, and the Easyshrink® shrinking device



## HYDRAULIC, EFFICIENT AND VERY SIMPLE

### BENEFITS:

- Run out max.  $3\mu\text{m}$  at  $3\times D$ , for high precision machining
- Very easy to use, fast tool replacement
- Accurately balanced, ideal for high speed machining
- Offered in a Heavy Duty version with high gripping forces appropriate for milling operations



## VERSATILITY OF COLLET CHUCKS

### BENEFITS:

- Flexible system allows various tool shank diameters to be held using the same tool holder body
- Offered in two versions - Standard ER collet chucks EPB 5675 with  $10\mu\text{m}$  runout at  $3\times D$ - High Precision collet chucks EPB 5672 combining a  $3\mu\text{m}$  runout at  $3\times D$ , a high clamping force, and symmetrical design. Chrome coated.
- Accurately balanced for high speed applications



## STEADYLINE™: YOUR PRODUCTIVITY BOOSTER

### BENEFITS:

- Full range of vibration-damping tool holders for long reaches, higher cutting parameters



## HIGH PRECISION BORING

### BENEFITS:

- A complete range of boring heads for roughing and finishing from  $\varnothing 0.3$  to  $3201\text{ mm}$
- Graflex modular connection for best precision and flexibility

# **TOOLS DEDICATED TO PRODUCTIVITY**



***TOOLING SYSTEMS***

***CUSTOM TOOLING***



***MILLING***

***TURNING & THREADING***



***HOLEMAKING***

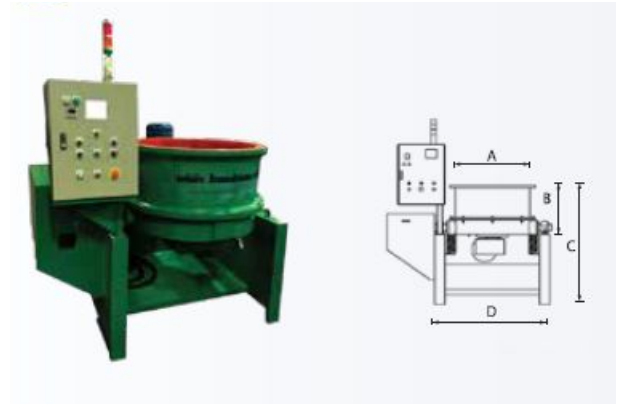
# DIE CASTING PART





# CRIPTON

VIBATOR for DEBBURING FINISHING MACINE



## Hard grinding media (קורנר)

Hard grinding, suitable for deburring and smoothing



TRH



RRH



TARH

## Light grinding media (קורנר קל)

Light grinding, suitable for deburring and smoothing



TR



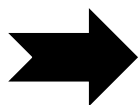
RR



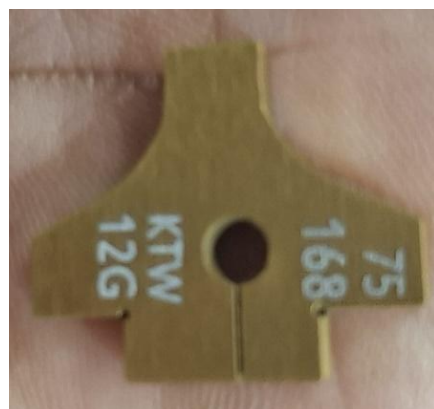
TAR

# COATING & REGRINDING

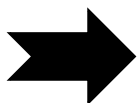
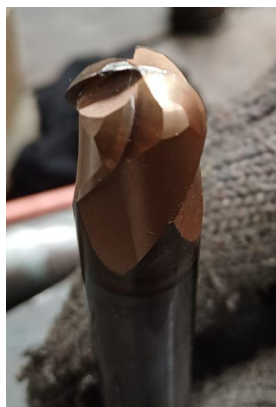
**BEFOR**



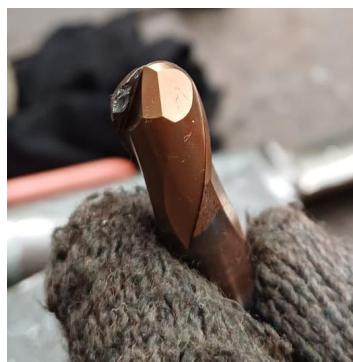
**AFTER**



**BEFOR**



**AFTER**



# DIE CASTING COOLER

Die-Casting Cooler





**ATAKA SARANA INDONESIA**

PHONE : (62-21) 2909 2832 / 33

MOBILE : 0813 8482 5555

EMAIL : [diding.ati@ataka.co.id](mailto:diding.ati@ataka.co.id)

[marketing.ati@ataka.co.id](mailto:marketing.ati@ataka.co.id)